

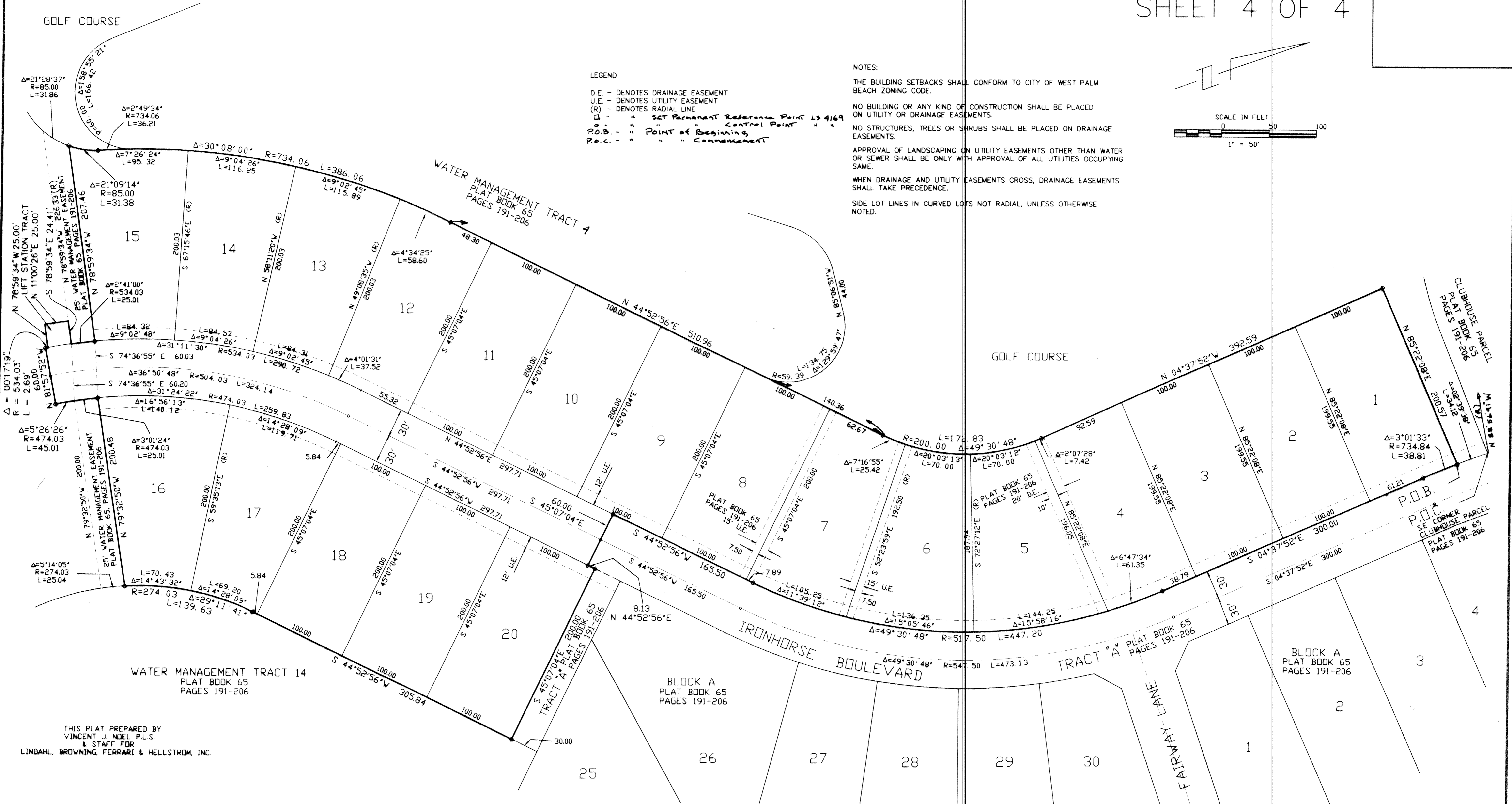
APRIL, 1994

A PLAT OF IRONHORSE PARCEL B-1

187

BEING A RE-PLAT OF A PORTION OF PARCEL B, PLAT OF IRONHORSE, A R.P.D.D.
AS RECORDED IN PLAT BOOK 65, PAGES 191-206,
AND LYING IN SECTION 27, TOWNSHIP 42 SOUTH, RANGE 42 EAST,
CITY OF WEST PALM BEACH, PALM BEACH COUNTY, FLORIDA.

SHEET 4 OF 4

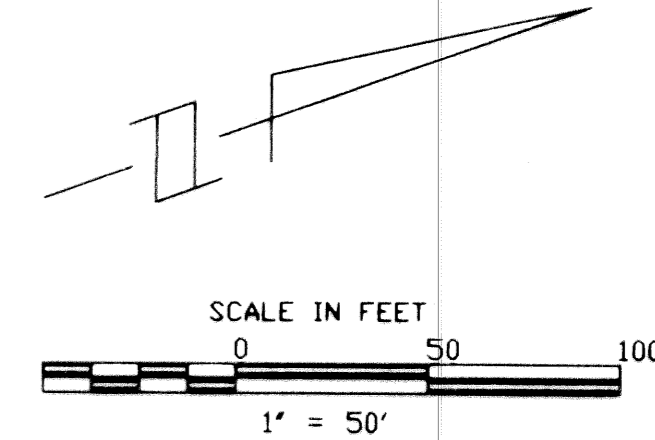


LEGEND

- D.E. - DENOTES DRAINAGE EASEMENT
- U.E. - DENOTES UTILITY EASEMENT
- (R) - DENOTES RADIAL LINE
- CP - " SET Permanent Reference Point LS 4169 " Control Point "
- P.O.B. - " POINT of Beginning "
- P.C. - " " Commencement "

NOTES:

- THE BUILDING SETBACKS SHALL CONFORM TO CITY OF WEST PALM BEACH ZONING CODE.
- NO BUILDING OR ANY KIND OF CONSTRUCTION SHALL BE PLACED ON UTILITY OR DRAINAGE EASEMENTS.
- NO STRUCTURES, TREES OR SHRUBS SHALL BE PLACED ON DRAINAGE EASEMENTS.
- APPROVAL OF LANDSCAPING ON UTILITY EASEMENTS OTHER THAN WATER OR SEWER SHALL BE ONLY WITH APPROVAL OF ALL UTILITIES OCCUPYING SAME.
- WHEN DRAINAGE AND UTILITY EASEMENTS CROSS, DRAINAGE EASEMENTS SHALL TAKE PRECEDENCE.
- SIDE LOT LINES IN CURVED LOTS NOT RADIAL, UNLESS OTHERWISE NOTED.



SUBDIVISION * IRONHORSE PARCEL B.1
 BOOK 72 PAGE 187
 FLOOD ZONE FLOOD MAP *
 QUAD # ZONING
 SE
 RWD NAME c/wor
 ZIP CODE

THIS PLAT PREPARED BY
 VINCENT J. NOEL P.L.S.
 & STAFF FOR
 LINDAHL, BROWNING, FERRARI & HELLSTROM, INC.

lbf LINDAHL, BROWNING, FERRARI, & HELLSTROM, INC.
 CONSULTING ENGINEERS, PLANNERS & SURVEYORS

210 JUPITER LAKES BLVD. SUITE 104 WEST PALM BEACH, FL 33409
 407-746-3648

2400 SE HENRIEY ROAD SUITE 300 FT. PIERCE, FL 34996
 407-298-0883

2222 COLONIAL ROAD SUITE 200 WEST PALM BEACH, FL 33409
 407-461-2450

2000 PALM BEACH LAKES BLVD. SUITE 200 WEST PALM BEACH, FL 33409
 407-684-3375

4 4